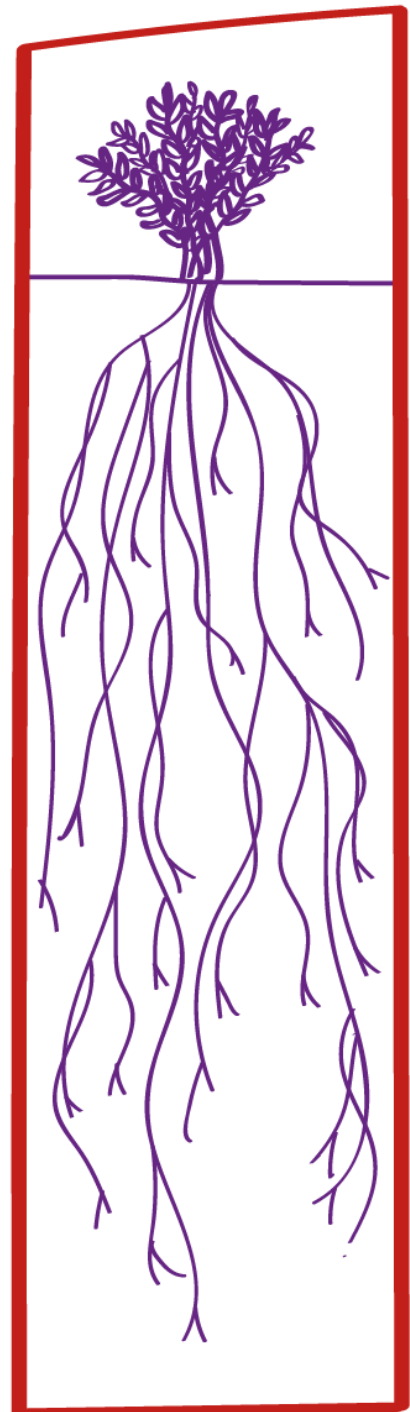
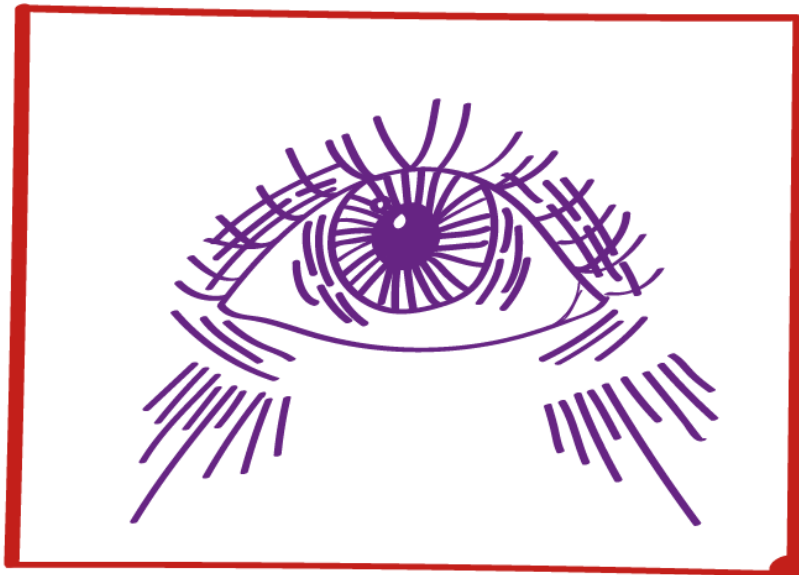
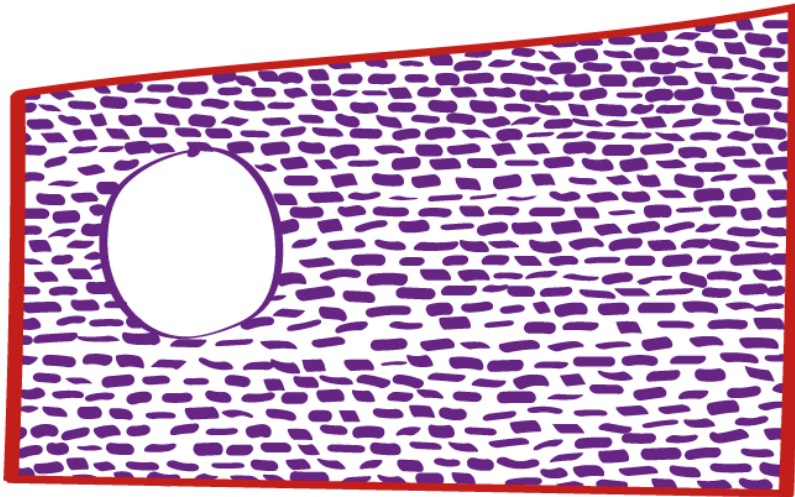


THE OPEN MIND AND THE CRITICAL EYE



Alianza por la
Solidaridad

act:onaid

EU Aid Volunteers
We Care, We Act



WELCOME

¡Hello!

We are glad to see you here, because this means you are on your way to communicating in a gender-sensitive manner.

In this course we will learn what a gender perspective is and why we should understand it as transversal and intersectional. Then, starting from the analysis of social communication in today's world, we will identify those aspects we should take into account and pay attention to for transformative communication. Finally, we will apply this knowledge to our fieldwork in order to understand how to use it in our professional lives.

You will find a simple quiz at the end of each section and a final quiz on the content of the whole course. At the end of the course, you can download a complete guide which contains all the information you will have acquired during this journey.

This is only the beginning, it will be a long and often difficult path. You are going to unlearn and then to learn again and you will have to question yourself. Be patient and don't lose your motivation.

Let's get started!



